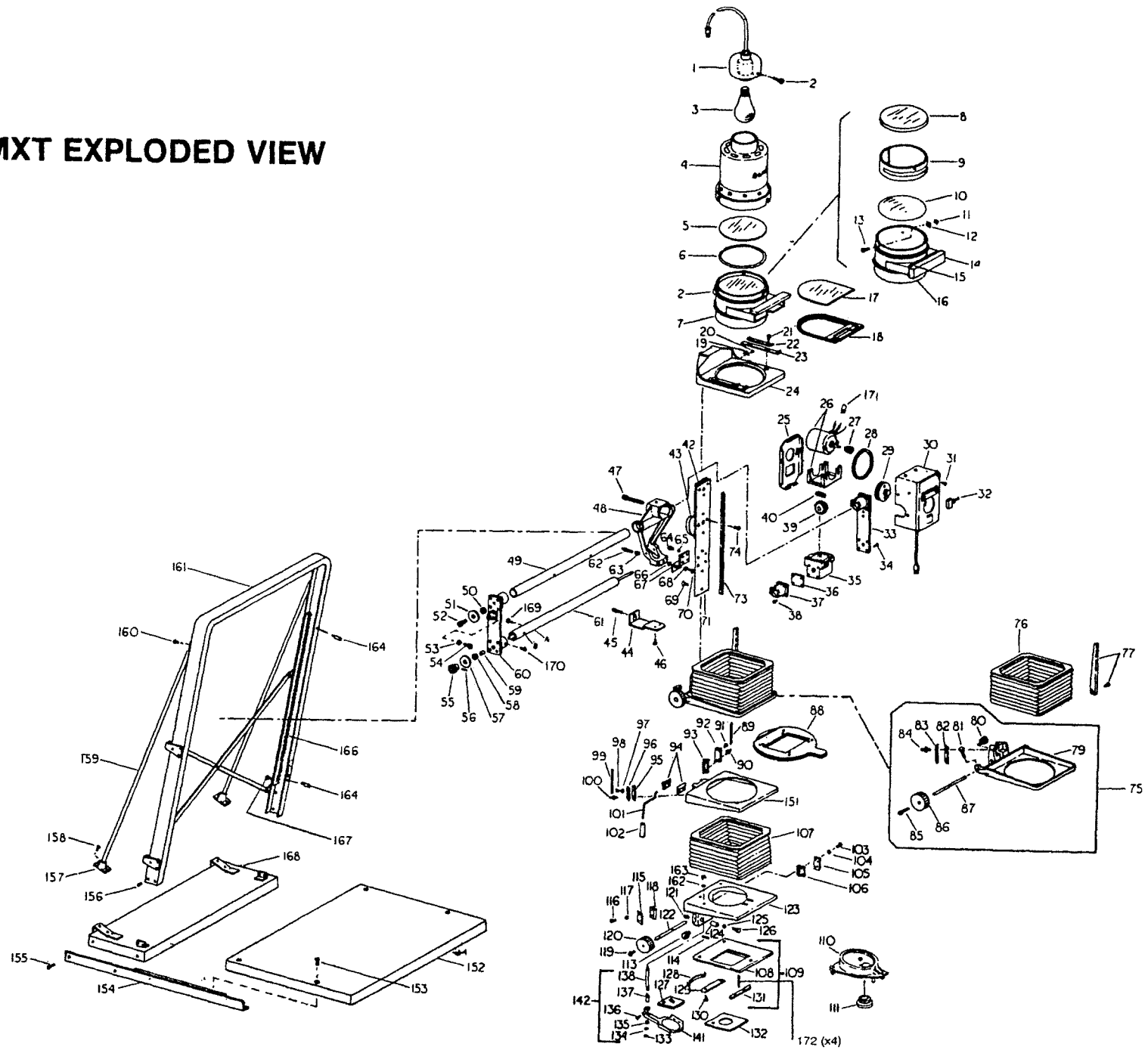


45MXT EXPLODED VIEW



45MXT PARTS LIST

Ref. No.	Description	Part/Cat. No.	Ref. No.	Description	Part/Cat. No.	Ref. No.	Description	Part/Cat. No.	Ref. No.	Description	Part/Cat. No.
1	Lamp Cap Assembly	10-04506	39	Worm Gear	562-11-53	84	Stud	10-04613-02	130	Screw, Tapp - #4BT x 3/8"	
2	Thumb Screw	568-20-05	40	Worm	562-11-05	85	Screw, Machine - #8-32 x 1/2"			Retainer - Front	538-13-12-31
3	Lamp PH212 (150 watts, 117V)	Cat. No. 8100	42	Spacer - Bar	10-31368		Long Pan Phillips	521-16-02-01	131	Retainer - Blank	See Catalog
3A	Lamp PH2120 (150 watts, 230V)	Cat. No. 8107	43	Spacer - Pivot	10-31369	86	Knob	568-05-07	133	Retaining Ring E-Type 5/16" Shaft	555-26-13
4	Lamp House Assembly	10-04507	44	Locking Bracket	10-49567	87	Shaft	10-04560	134	Bow Washer 21/64" I.D., 9/16" O.D. x 1/8"	549-20-25
5	Heat Absorber Glass	Cat. No. 8077	45	Locking Screw	540-43-46	*88	Negative Carrier	See Catalog	135	Eyelet	570-54-11
6	Spacer Ring	555-20-16	46	Screw, Tapp #10F x 3/8"		89	Spring - Stage (Right)	562-70-21	136	Thumbscrew	540-43-07
7	Condenser Housing Assembly	Cat. No. 8115		Long Pan Phillips	538-23-10-10	90	Stud	10-04613-02	137	Tube and Stop Assembly	10-15370
8	Condenser - Top (7 1/8")	680-14-54	47	Screw, Machine - #3/8-16 x 3"		90	Screw, Machine - #4-40 x 1/4"		138	Center Support Rod	10-49563
9	Separator - Condenser	10-04769		Long Hex Cap	531-66-40-02		Lg. Fill. Slotted Hd.	515-08-11-01	139	Eyelet	570-54-11
10	Condenser - Bottom (7 3/8")	680-14-53	48	Enlarger Head Carriage	10-04535	92	Plate, Spring Backup	10-08118	140	Retaining Ring E-Type 1/4" Shaft	555-26-10
11	Nut - Tinnerman #8	555-01-08	49	Upper Tube	10-04583	93	Bearing	Cat. No. 7009	141	Filter Holder Arm	10-15373
12	Pad - Condenser Retaining	10-04536	50	Washer - 1/4" Nom., 5/8" O.D. x 1/16"	548-34-10	94	Bracket - Lever Hinge	10-04610	142	Filter Holder Assembly	10-49520
13	Screw, Tapp - #8B x 1/4"		51	Wheel	10-04592	95	Bearing	7009	151	Lower Negative Stage	10-04533
	Lg. Flat Hd. Phillips	538-21-16-25	52	Shoulder Screw	540-30-30	96	Plate - Spring Backup	10-08118	152	Baseboard	10-04740
14	Cover & Hinge Assembly	10-04763	53	Side Wheel	10-04586	97	Nut - #4-40 Hex	545-15-20-01	153	Screw, Machine - 1/4-20 x 1"	
15	Screw, Tap - #6B x 1/4"		54	Shoulder Screw	540-30-18	98	Screw, Machine - #4-40 x 1/4"			Long Flat Phillips	527-32-72-01
	Long Pan Phillips	538-19-08-37	55	Spur Gear	562-03-11		Long Fillister Slot	515-08-11-01	154	Angle Assembly (Specify R.H. or L.H.)	
16	Housing - Condenser	10-04761	56	Roll Pin	553-09-30	99	Spring - Stage (Left)	562-70-21		(R)	10-04735-01
17	Filter Support	680-86-04	57	Wheel	10-04592	100	Stud	10-04613-02		(L)	10-04735-02
18	Filter Holder	10-04775	58	Washer - 25/64" I.D., 5/8" O.D. x .015"	548-48-03	101	Stage Opening Lever	10-04611			
19	Indicating Pointer	10-04563	59	Bearing	560-40-14	102	Knob	568-40-06			
20	Screw, Tapp - #4B x 3/16"		60	Collar & Bracket Assembly - Right	10-04556	103	Screw, Machine - #4-40 x 1/4"		155	Screw, Machine - 1/4-20 x 1/2"	
	Long Pan Phillips	538-13-12-30	61	Lower Counterbalance Assembly	10-04565		Long Fillister Slot	515-08-11-01		Long Truss Phillips	527-16-32-01
21	Screw - Shoulder	540-30-12	62	Screw, Machine - #1/4-20 x 1/4"		104	Nut - #4-40 Hex	545-15-20-01	156	Screw, Machine - #10-32 x 3/8"	
22	Latch Spring	10-04562		Lg Hex Head	527-40-40-45	105	Plate - Spring Backup	10-08118		Long Truss Phillips	538-23-16-14
23	Latch (Specify R.H. or L.H.)	(R) 10-04561-01	63	Nut - 1/4"-20 Hex	545-27-24-01	106	Bearing	7009	157	Foot - Frame Support	10-04625
	(L)	10-04561-02	64	Screw, Machine - #10-32 x 3/8"		107	Lower Bellows Assembly	10-04655-15	158	Screw, Machine - #10-32F x 1/2"	
				Long Pan Phillips	524-12-02-01	108	Lensboard Plate	10-49523		Long Rnd. Phillips	538-23-16-14
24	Condenser Support Stage	10-04540-01	65	Lockwasher - #10	549-40-15	109	Lensboard Adapter Assembly	10-49521	159	Rod - Frame Support	10-04741
25	Motor Rear Cover	10-04599	66	Washer - #1/4" I.D., 3/4" O.D. x 1/16"	548-34-15	*110	Lens Turret	Cat. No. 8225	160	Screw, Machine - 10-32 x 1/2"	
26	Motor & Bracket Ass'y. 117V	10-31394-10	67	Tilt Bracket	10-49566	*111	Lens Adapter Spacer	See Catalog		Long Truss Phillips	524-16-02-01
26A	Motor & Bracket Ass'y. 230V	10-31394-15	68	Lockwasher - 1/4"	549-40-15	113	Gear	562-03-23	161	Frame	10-51332-21
27	Small Pulley	10-04581	69	Screw, Machine - #6-32 x 9/16"		114	Roll Pin	553-09-62	162	Lock Washer, Ext. Tooth 1/4"	549-47-21
28	Belt	562-36-01		Long Pan Phillips	519-18-02-01	115	Plate, Spring Backup	10-08118	163	Nut 1/4 x 20"	545-27-24-01
29	Large Pulley	10-15192	70	Screw, Machine - #1/4-20 x 3/4"		116	Screw, Machine - #4-40 x 1/4"		164	Stop Pin	10-04628
30	Motor Cover Assembly (117V)	10-49581-50		Long Hex	527-24-40-11		Lg. Fill. Hd. Slotted	515-08-11-01	166	Carriage Elevating Rack	10-49573
30A	Motor Cover Assembly (230V)	10-49581-60	71	Stage Mounting Bar	10-31366	117	Nut - #4-40 Hex	545-15-20-01	167	Screw, Machine - 6-32 x 3/8"	
31	Screw, Machine - #6-32 x 1/4"		73	Rack - Lens Focus	10-04572	118	Bearing	7009		Long Truss Phillips	519-12-32-01
	Long Pan Phillips	519-08-02-01	74	Screw, Machine - 1/4-20 x 1 1/4"		119	Screw, Machine - #8-32 x 1/2"		168	Basepan Assembly	10-04729
32	Motor Switch	610-10-62		Lg. Flat Hd. Slotted	527-40-71-01		Long Pan Phillips	521-16-02-01	169	Screw, Machine - 8-32 x 3/8"	
33	Bracket Assembly - Left	10-04550	75	Upper Negative Stage Assembly	10-04514	120	Focusing Knob	568-05-07		Long Pan Phillips	521-12-02-01
34	Screw, Machine - #8-32 x 5/8"		76	Upper Bellows Assembly	10-04655-10	121	Cartridge - Locking	10-04645	170	Screw, Machine - 10-32 x 1/4"	
	Long Flat Phillips	521-20-72-01	77	Negative Size Indicator Kit	10-31362	122	Focusing Shaft	10-49518		Long Pan Phillips	524-10-02-01
35	Gear Box	10-04577	79	Upper Negative Stage	10-04532	123	Lens Stage	10-49511	171	Wire Nut	600-25-02
36	Bushing Retainer	10-04594	80	Gear	562-03-05	124	Spacer, Locking Lens Stage	10-04646	172	Set Screw 10-32 x 3/4"	540-22-12
37	Clamp Collar	10-04590-03	81	Knob - Locking	568-20-06	126	Knob	568-20-07			
38	Screw, Machine - #8-32 x 3/8"		82	Bearing, Slide	7009	*127	Filter - Red Safety	Cat. No. 8040			
	Long Pan Phillips	521-12-02-01	83	Plate, Spring Backup	10-08118	128	Spring	10-04543			

*Accessories available from your Beseler dealer.
The optional Condenser Lamphouse, Cat. #8121 (117V) or Cat. #8123 (230V) is available separately from your Beseler dealer. The components of this lamphouse are shown here as items 1-7, 17, 18 and 77.